



Repair Part Sheet

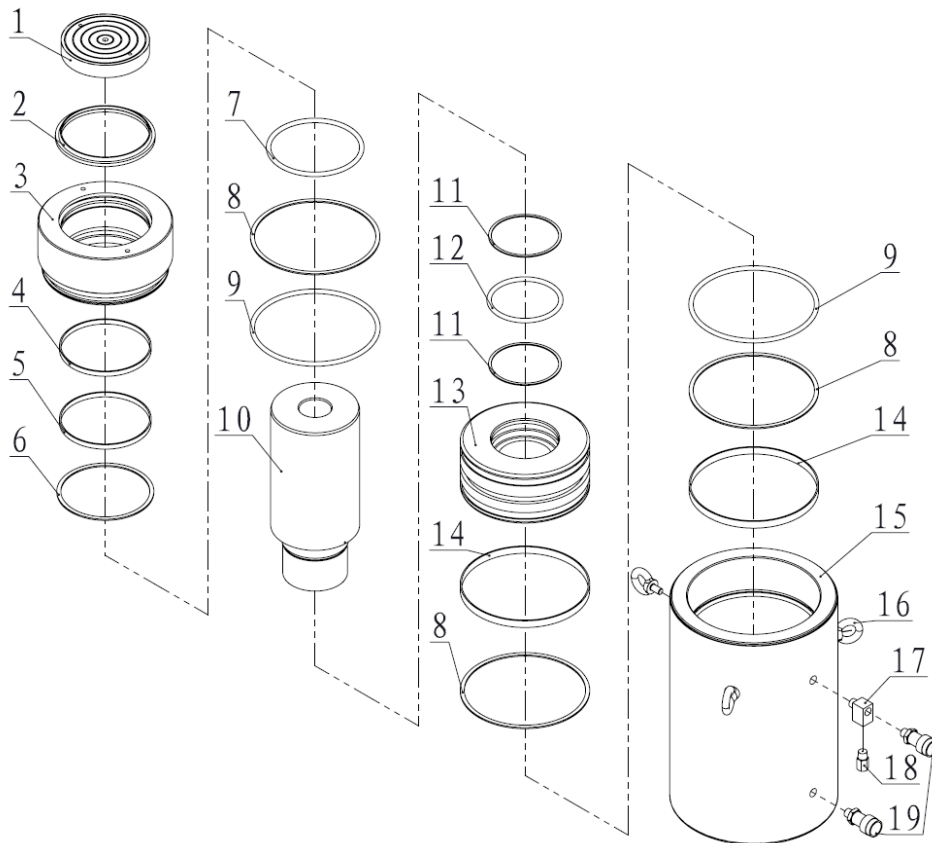
BMD- 3006 Cylinder

Form No. BMD3006RP Rev. A Date: 20.05.2015



BELIUM Cylinders should be repaired only by a qualified operator or Authorized BELIUM Service Centers. Use Only BELIUM or other approved hydraulic oil. Release pressure in hydraulic system and disconnect hose(s) before making repair.

Parts List



Item No.	Part Number	Description	Quantity	Item No.	Part Number	Description	Quantity
1	BMD300-02	Saddle	1	11★	21113	Gasket	2
2★	JB-d165	Wiper Ring	1	12★	24119	O-ring	1
3	BMD300-01	Guide Ring	1	13	BMD300-03	Piston Base	1
4	21619	Anti-wear Ring	1	14	21593	Anti-wear Ring	2
5	21514	Anti-wear Ring	1	15	BMD3006-01	Cylinder	1
6★	21171	Gasket	1	16	11018	Eye Ring	3
7★	24134	O-ring	1	17	BJF015	Fitting	1
8★	21214	Gasket	3	18	BF3.1	Safety Valve	1
9★	24148	O-ring	2	19	BAC-201A	Coupler	2
10	BMD3006-02	Piston	1				

★ Items included in Repair Kit, Repair Kit order number: **BMD3006-RP-A**