



Repair Part Sheet

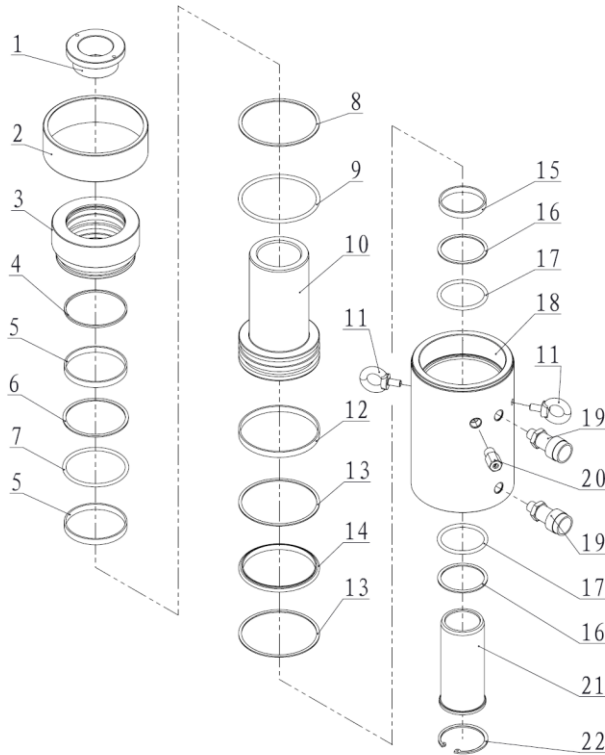
BMDH-1003, BMDH-1006, BMDH-10010 Cylinder

Form No. BMDH1003RP Rev. A Date: 20.05.2015



BELIUM Cylinders should be repaired only by a qualified operator or Authorized BELIUM Service Centers. Use Only BELIUM or other approved hydraulic oil. Release pressure in hydraulic system and disconnect hose(s) before making repair.

Parts List



Item No.	Part Number	Description	Qty.	Item No.	Part Number	Description	Qty.	
1	BMSH100T-01	Saddle	1	13★	21158	Gasket	2	
2	BMSH100T-03	Thread Cover	1	14★	21013	T-ring	1	
3	BMDH1003-1	Guide Ring	1	15	21490	Anti-wear Ring	1	
4★	21714	Wiper Ring	1	16★	21036	Gasket	2	
5	21574	Anti-wear Ring	2	17★	24100	O-ring	2	
6★	21116	Gasket	1	18	BMDH1003-2	Cylinder BMDH-1003 Only	1	
7★	24120	O-ring	1		BMDH1006-2	Cylinder BMDH-1006 Only	1	
8★	21161	Gasket	1		BMDH10010-2	Cylinder BMDH-10010 Only	1	
9★	24133	O-ring	1	19	BAC-201A	Coupler	2	
10	BMDH1003-3	Piston BMDH-1003 Only	1	20	BF3.1	Safety Valve	1	
	BMDH1006-3	Piston BMDH-1006 Only	1		21	BMSH1003-03	Small Piston BMSH-1003 Only	1
	BMDH10010-3	Piston BMDH-10010 Only	1			BMSH1006-03	Small Piston BMSH-1006 Only	1
11	11017	Eye Ring	2	21	BMSH10010-03	Small Piston BMSH-10010 Only	1	
12	21513	Anti-wear Ring	1		22	13189	Snap Ring	1

★ Items included in Repair Kit, Repair Kit order number: **BMDH1001-RP-A**