



Repair Part Sheet

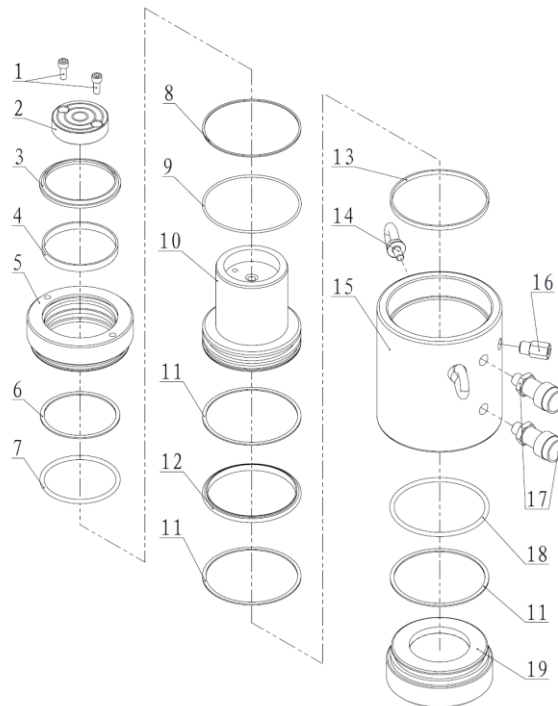
**BMDX-1002, BMDX-1004, BMDX-1006, BMDX-1008,
BMDX-10010, BMDX-10012 Cylinder**

Form No. BMDX1002RP Rev. A Date: 20.05.2015



BELIUM Cylinders should be repaired only by a qualified operator or Authorized BELIUM Service Centers. Use Only BELIUM or other approved hydraulic oil. Release pressure in hydraulic system and disconnect hose(s) before making repair.

Parts List



Item No.	Part Number	Description	Qty.	Item No.	Part Number	Description	Qty.
1	13003	Bolt	2	11★	21104	Gasket	3
2	BMDX1002-3	Saddle	1	12★	21012	T-ring	1
3★	JB-d95	Wiper Ring	1	13	21567	Anti-wear Ring	1
4	21554	Anti-wear Ring	1	14	11017	Eye Ring	2
5	BMDX1002T-2	Stop Ring	1	15	BMDX1002-1	Cylinder BMDX1002T only	1
6★	21033	Gasket	1		BMDX1004-1	Cylinder BMDX1004T only	1
7★	24098	O-ring	1		BMDX1006-1	Cylinder BMDX1006T only	1
8★	21109	Gasket	1		BMDX1008-1	Cylinder BMDX1008T only	1
9★	24277	O-ring	1		BMDX10010-1	Cylinder BMDX10010T only	1
	BMDX10012-1	Cylinder BMDX10012T only	1		BMDX10012-1	Cylinder BMDX10012T only	1
10	BMDX1002-2	Piston BMDX1002T only	1	16	BF3.1	Safety Valve	1
	BMDX1004-2	Piston BMDX1004T only	1	17	BAC-201A	Coupler	2
	BMDX1006-2	Piston BMDX1006T only	1	18★	24114	O-ring	1
	BMDX1008-2	Piston BMDX1008T only	1	19	BMDX1002-4	Cylinder Base	1
	BMDX10010-2	Piston BMDX10010T only	1				
	BMDX10012-2	Piston BMDX10012T only	1				

★ Items included in Repair Kit, Repair Kit order number: **BMDX1002-RP-A**