



Repair Part Sheet

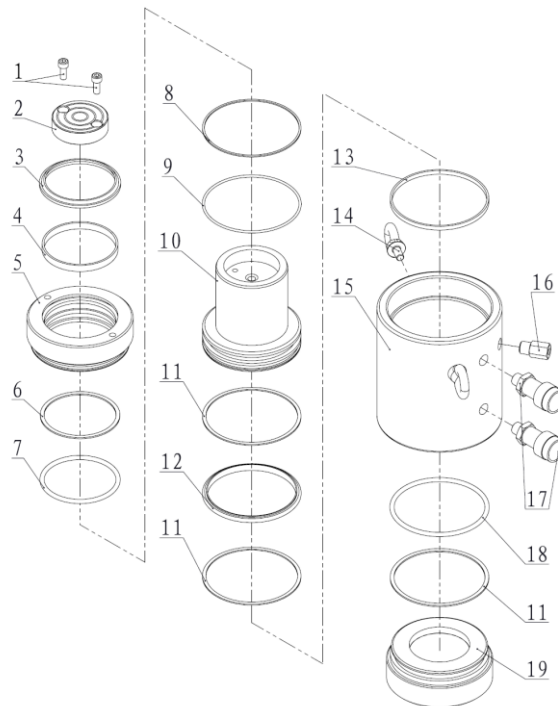
**BMDX-1502, BMDX-1504, BMDX-1506, BMDX-1508,
BMDX-15010, BMDX-15012 Cylinder**

Form No. BMDX1502RP Rev. A Date: 20.05.2015



BELIUM Cylinders should be repaired only by a qualified operator or Authorized BELIUM Service Centers. Use Only BELIUM or other approved hydraulic oil. Release pressure in hydraulic system and disconnect hose(s) before making repair.

Parts List



| Item No. | Part Number | Description | Qty. | Item No. | Part Number | Description | Qty. |
|----------|-------------|------------------------|------|----------|--------------|--------------------------|------|
| 1 | 13003 | Bolt | 2 | 11★ | 21147 | Gasket | 3 |
| 2 | BMDX1502-3 | Saddle | 1 | 12★ | 21014 | T-ring | 1 |
| 3★ | JB-d115 | Wiper Ring | 1 | 13 | 21654 | Anti-wear Ring | 1 |
| 4 | 21608 | Anti-wear Ring | 1 | 14 | 11017 | Eye Ring | 2 |
| 5 | BMDX1502T-2 | Stop Ring | 1 | 15 | BMDX1502T-1 | Cylinder BMDX1502T only | 1 |
| 6★ | 21083 | Gasket | 1 | | BMDX1504T-1 | Cylinder BMDX1504T only | 1 |
| 7★ | 24111 | O-ring | 1 | | BMDX1506T-1 | Cylinder BMDX1506T only | 1 |
| 8★ | 21425 | Gasket | 1 | | BMDX1508T-1 | Cylinder BMDX1508T only | 1 |
| 9★ | 24278 | O-ring | 1 | | BMDX15010T-1 | Cylinder BMDX15010T only | 1 |
| | | | | | BMDX15012T-1 | Cylinder BMDX15012T only | 1 |
| 10 | BMDX1502-2 | Piston BMDX1502T only | 1 | 16 | BF3.1 | Safety Valve | 1 |
| | BMDX1504-2 | Piston BMDX1504T only | 1 | 17 | BAC-201A | Coupler | 2 |
| | BMDX1506-2 | Piston BMDX1506T only | 1 | 18★ | 24128 | O-ring | 1 |
| | BMDX1508-2 | Piston BMDX1508T only | 1 | 19 | BMDX1502-4 | Cylinder Base | 1 |
| | BMDX15010-2 | Piston BMDX15010T only | 1 | | | | |
| | BMDX15012-2 | Piston BMDX15012T only | 1 | | | | |

★ Items included in Repair Kit, Repair Kit order number: **BMDX1502-RP-A**