



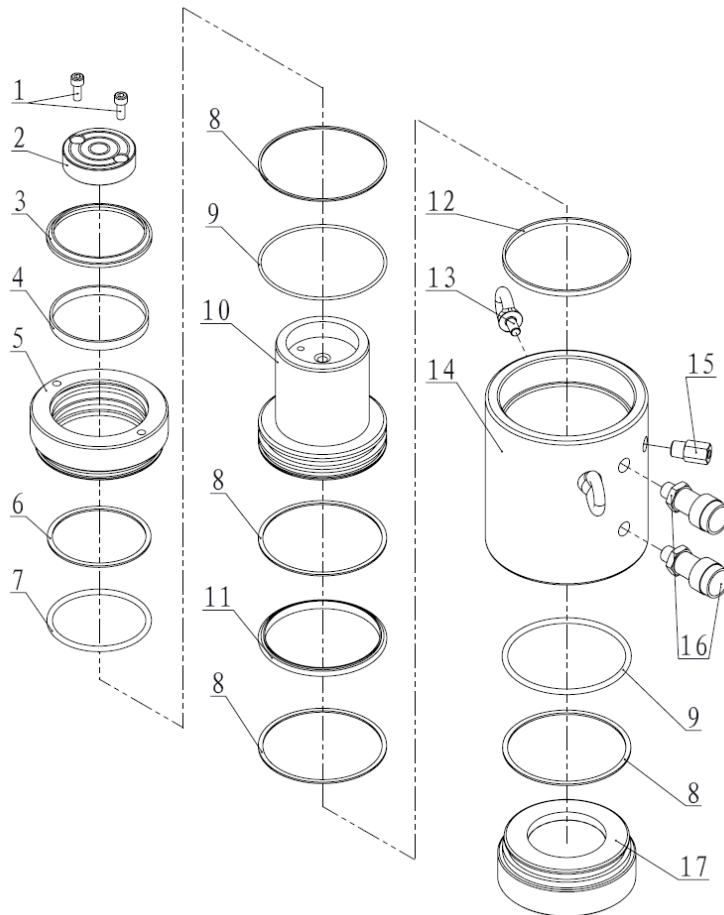
Repair Part Sheet

BMDX-2002, BMDX-2006, BMDX-20012 Cylinder
 Form No. BMDX2002RP Rev. A Date: 20.05.2015



BELIUM Cylinders should be repaired only by a qualified operator or Authorized BELIUM Service Centers. Use Only BELIUM or other approved hydraulic oil. Release pressure in hydraulic system and disconnect hose(s) before making repair.

Parts List



Item No.	Part Number	Description	Qty.	Item No.	Part Number	Description	Qty.
1	13018	Bolt	2	11	21016★	T-ring	1
2	BMDX2002-3	Saddle	1	12	21658	Anti-wear Ring	1
3★	J-d135	Wiper Ring	1	13	11018	Eye Ring	2
4	21576	Anti-wear Ring	1	14	BMDX2002-1	Cylinder BMDX2002T only	1
5	BMDX2002-2	Stop Ring	1		BMDX2006-1	Cylinder BMDX2006T only	1
6★	21126	Gasket	1		BMDX20012-1	Cylinder BMDX20012T only	1
7★	24122	O-ring	1	15	BF3.1	Safety Valve	1
8★	21183	Gasket	4	16	BAC-201A	Coupler	2
9★	24139	O-ring	2	17	BMDX2002-4	Cylinder Base	1
10	BMDX2002-2	Piston BMDX2002 only	1				
	BMDX2006-2	Piston BMDX2006 only	1				
	BMDX20012-2	Piston BMDX20012 only	1				

★ Items included in Repair Kit, Repair Kit order number: **BMDX2002-RP-A**