



## Repair Part Sheet

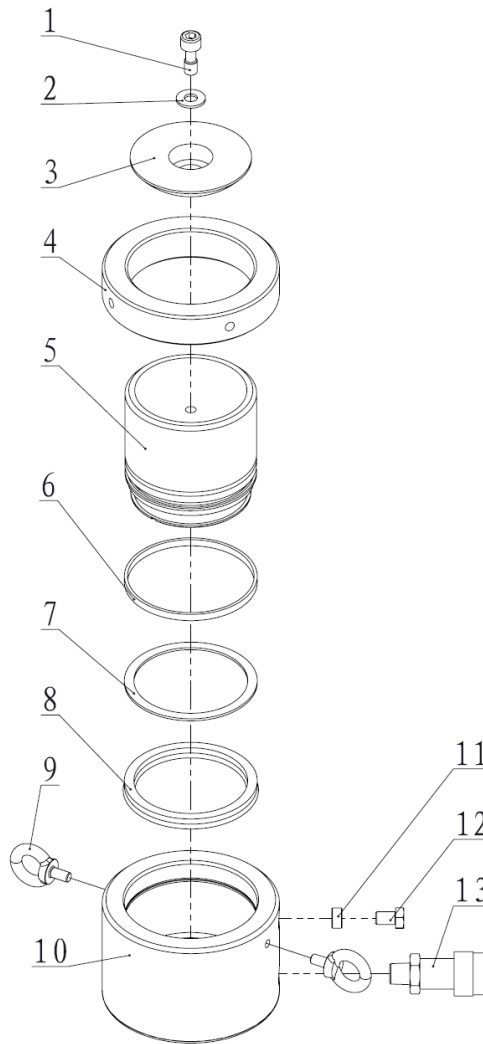
### BMLL-1602 Cylinder

Form No. BMLL1602RP Rev. A Date: 20.05.2014



BELIUM Cylinders should be repaired only by a qualified operator or Authorized BELIUM Service Centers. Use Only BELIUM or other approved hydraulic oil. Release pressure in hydraulic system and disconnect hose(s) before making repair.

### Parts List



Item No.	Part Number	Description	Quantity	Item No.	Part Number	Description	Quantity
1	13100	Bolt	1	8★	24326	Y-ring	1
2	BMLL1602-1	Washer	1	9	11018	Eye Screw	2
3	BMLL1602-2	Saddle	1	10	BMLL1602-4	Cylinder	1
4	BMLL1602-3	Lock Nut	1	11	BMLL250T-04	Release Nut	1
5	BMLL1602-5	Piston Rod	1	12	BMLL250T-05	Release Bolt	1
6	21514	Anti-wear Ring	1	13	BAC-201A	Coupler	1
7★	21163	Gasket	1				

★ Items included in Repair Kit, Repair Kit order number: **BMLL1602-RP-A**