



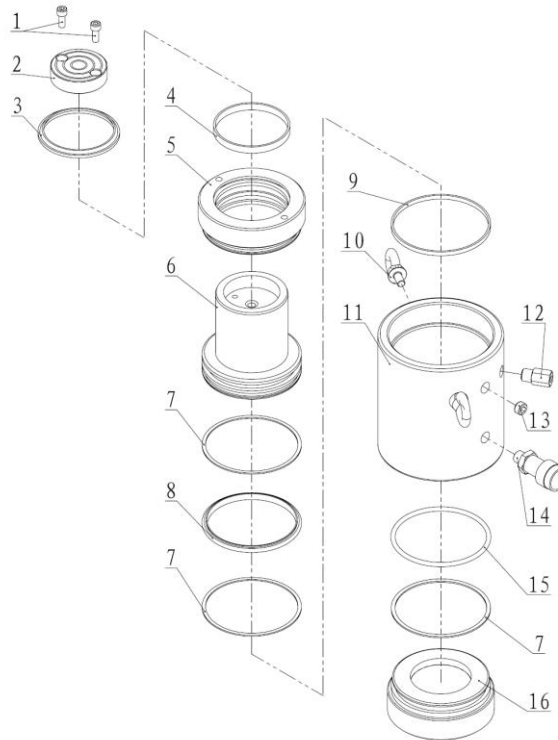
Repair Part Sheet

**BMSX-1002, BMSX-1004, BMSX-1006, BMSX-1008,
BMSX-10010, BMSX-10012 Cylinder**
Form No. BMSX1002 RP Rev. A Date: 20.05.2014



BELIUM Cylinders should be repaired only by a qualified operator or Authorized BELIUM Service Centers. Use Only BELIUM or other approved hydraulic oil. Release pressure in hydraulic system and disconnect hose(s) before making repair.

Parts List



Item No.	Part Number	Description	Qty.	Item No.	Part Number	Description	Qty.
1	13003	Bolt	2	9	21567	Anti-wear Ring	1
2	BMDX1002-3	Saddle	1	10	11017	Eye Ring	2
3★	JB-d95	Wiper Ring	1	11	BMDX1002-1	Cylinder BMSX1002 only	1
4	21554	Anti-wear Ring	1		BMDX1004-1	Cylinder BMSX1004 only	1
5	BMDX1002-2	Stop Ring	1		BMDX1006-1	Cylinder BMSX1006 only	1
6	BMDX1002-2	Piston BMSX1002 only	1		BMDX1008-1	Cylinder BMSX1008 only	1
	BMDX1004-2	Piston BMSX1004 only	1		BMDX10010-1	Cylinder BMSX10010 only	1
	BMDX1006-2	Piston BMSX1006 only	1	BMDX10012-1	Cylinder BMSX10012 only	1	
	BMDX1008-2	Piston BMSX1008 only	1	12	BF3.1	Safety Valve	1
	BMDX10010-2	Piston BMSX10010 only	1	13	13102	Screw	1
	BMDX10012-2	Piston BMSX10012 only	1	14	BAC-201A	Coupler	1
7★	21104	Gasket	3	15★	24114	O-ring	1
8★	21012	T-ring	1	16	BMDX1002-4	Cylinder Base	1

★ Items included in Repair Kit, Repair Kit order number: **BMSX1002-RP-A**