



## Repair Part Sheet

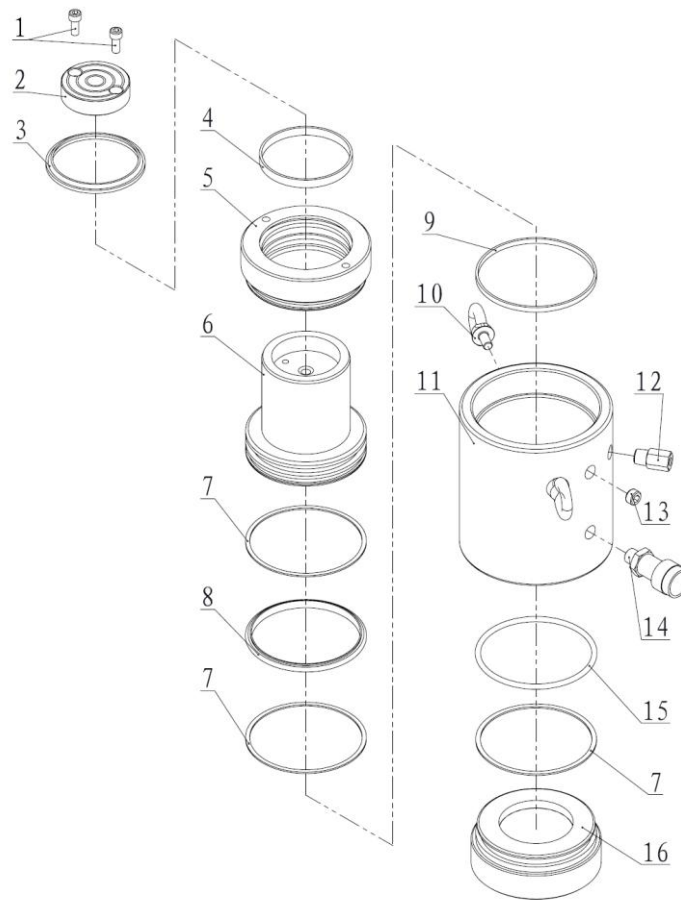
**BMSX-2002, BMSX-2006, BMSX-20012**  
**Cylinder**

Form No. BMSX2002RP Rev A Date: 20.05.2014



BELIUM Cylinders should be repaired only by a qualified operator or Authorized BELIUM Service Centers. Use Only BELIUM or other approved hydraulic oil. Release pressure in hydraulic system and disconnect hose(s) before making repair.

### Parts List



Item No.	Part Number	Description	Qty.	Item No.	Part Number	Description	Qty.
1	13018	Bolt	2	9	21658	Anti-wear Ring	1
2	BMDX2002-3	Saddle	1	10	11018	Eye Ring	2
3★	J-d135	Wiper Ring	1	11	BMDX2002-1	Cylinder BMSX2002T only	1
4	21576	Anti-wear Ring	1		BMDX2006-1	Cylinder BMSX2006T only	1
5	BMDX2002-2	Stop Ring	1		BMDX20012-1	Cylinder BMSX20012T only	1
6	BMDX2002-2	Piston BMSX2002T only	1	12	BF3.1	Safety Valve	1
	BMDX2006-2	Piston BMSX2006T only	1	13	13102	Screw	1
	BMDX20012-2	Piston BMSX20012T only	1	14	BAC-201A	Coupler	1
7★	21183	Gasket	3	15★	24139	O-ring	1
8★	21016	T-ring	1	16	BMDX2002-4	Cylinder Base	1

★ Items included in Repair Kit, Repair Kit order number: **BMSX2002-RP-A**